

MANUAL

Document Version 1.0 /July 2019



SMARTneo-2G

Cascading



SMARTneo-2G - Cascading Manual

Document Version 1.0 / Juli 2019

The German language version is the original

LOGICDATA Electronic & Software Entwicklungs GmbH

Wirtschaftspark 18

8530 Deutschlandsberg

Austria

Phone: +43 (0) 3462 51 98 0

Fax: +43 (0) 3462 51 98 1030

Internet: <http://www.logicdata.net>

Email: office.at@logicdata.net



INFO

This manual is valid for SMARTneo-2G Control Boxes.

1 QUICK REFERENCE

INFO

The Quick Reference is not a substitute for the product documentation. For your own safety, read the complete product documentation before connecting the components to form a Cascading System and putting it into operation.

Required components

For detailed instructions, see the “Required Components” subchapter for your chosen configuration.

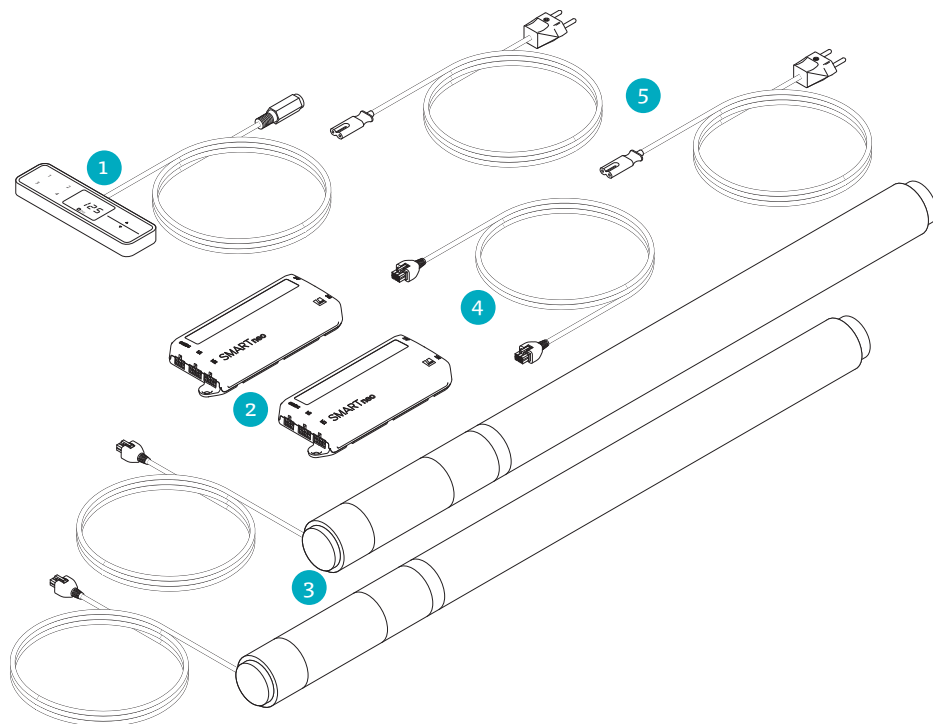


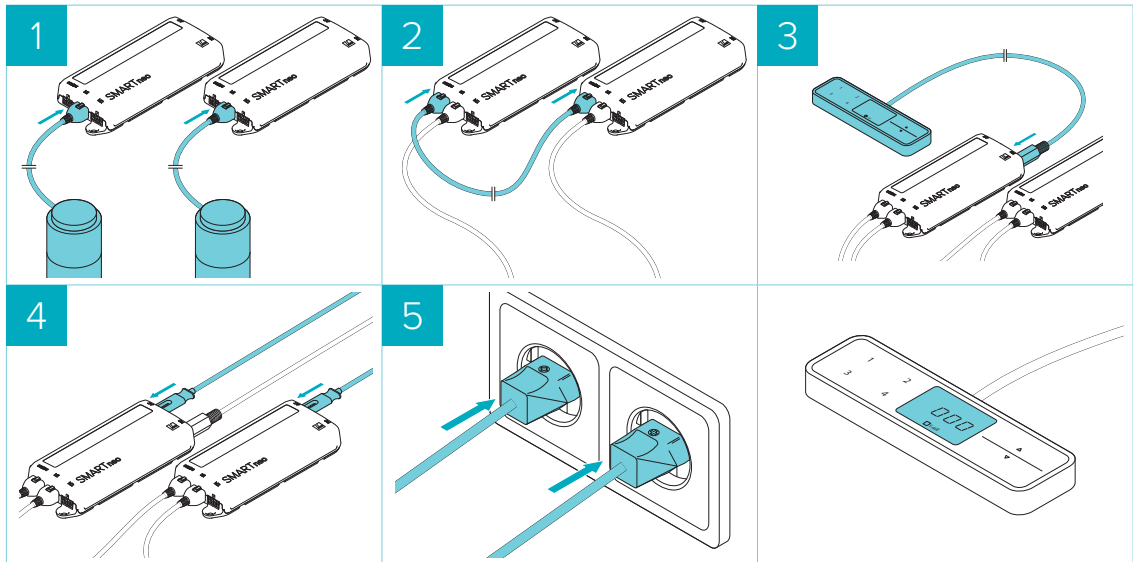
Fig. 1: Required components

| | |
|---|-----------------------------|
| 1 | 1 Hand Control |
| 2 | 2 SMARTneo-2G Control Boxes |
| 3 | 2 to 4 Actuators |
| 4 | 1 Cascading Cable |
| 5 | 2 Power Cables |



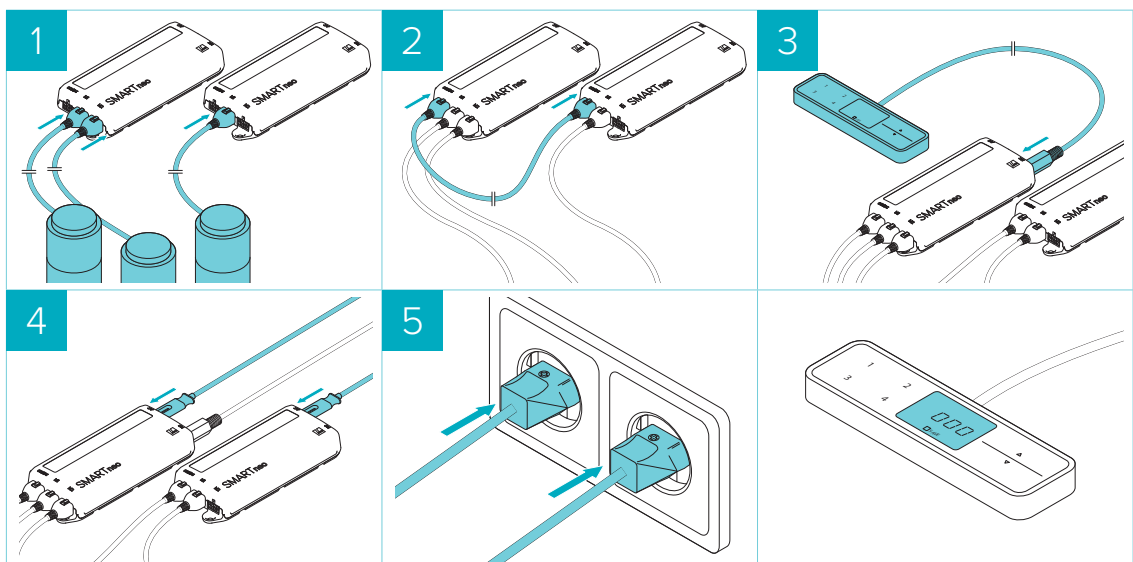
Cascading System with 2 Actuators

For detailed instructions, see chapter 6.3.5 on page 15



Cascading System with 3 Actuators

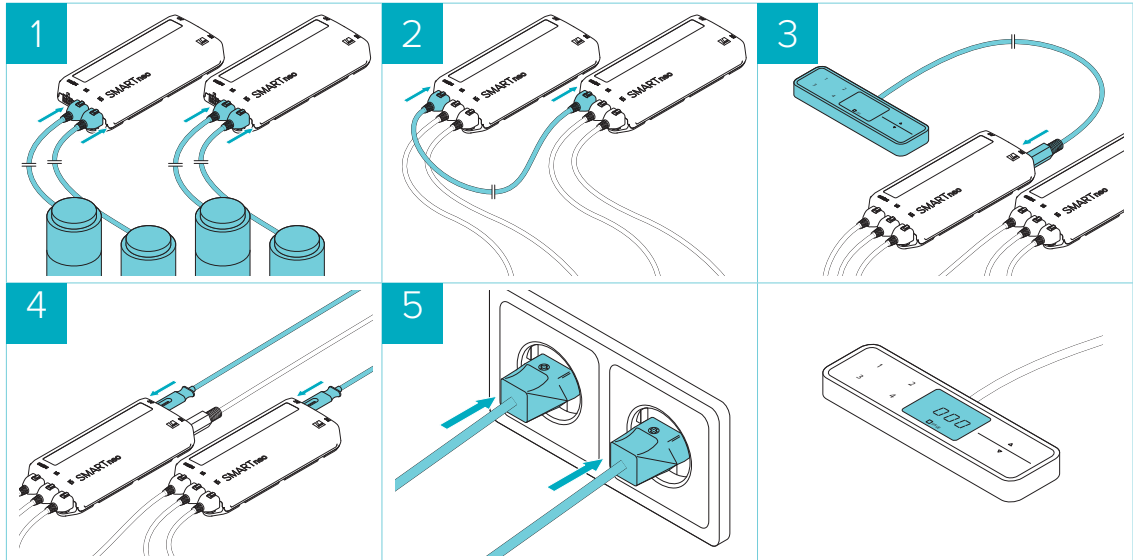
For detailed instructions, see chapter 6.6 on page 16





Cascading System with 4 Actuators

For detailed instructions, see chapter 6.7 on page 17



Performing the Reference Drive

For detailed instructions, see chapter 7.1 on page 18



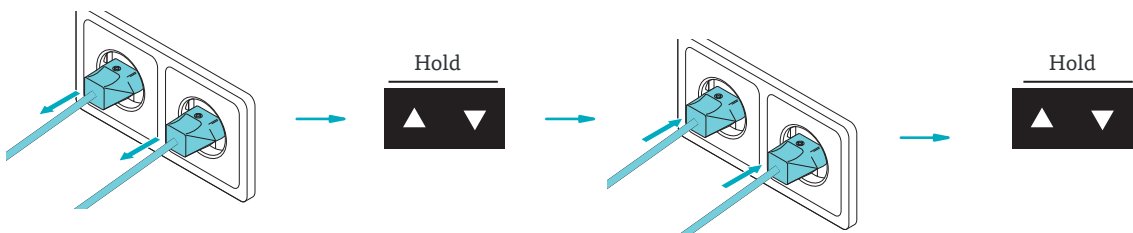
Factory Reset

For detailed instructions, see chapter 7.2 on page 18

Comfort:



Basic:





CONTENTS

| | | |
|----------|---|-----------|
| 1 | Quick reference | 3 |
| 2 | General information | 8 |
| 2.1 | Other applicable documents | 8 |
| 2.2 | Copyright | 8 |
| 2.3 | Royalty-free use of images and text | 8 |
| 2.4 | Trademarks | 8 |
| 3 | Safety | 9 |
| 3.1 | Target audience | 9 |
| 3.2 | General safety regulations | 9 |
| 3.3 | Intended use | 9 |
| 3.4 | Reasonably Foreseeable Misuse | 9 |
| 3.5 | Explanation of symbols and signal words | 10 |
| 3.6 | Liability | 10 |
| 3.7 | Residual risks | 11 |
| 3.8 | Skilled Persons | 12 |
| 3.9 | Notes for Resellers | 12 |
| 4 | Scope of delivery | 12 |
| 5 | Product | 13 |
| 5.1 | About Cascading | 13 |
| 5.2 | About the SMARTneo-2G | 13 |
| 5.2.1 | Control Box connections | 13 |
| 5.2.2 | Hand Control | 13 |
| 6 | Connecting the System | 14 |
| 6.1 | Safety | 14 |
| 6.2 | Dimensions | 14 |
| 6.3 | Assembly instructions | 14 |
| 6.4 | Specifications for the Cascading System | 14 |
| 6.5 | Cascading System with two Actuators | 15 |
| 6.5.1 | Required Components | 15 |
| 6.5.2 | Connecting the Components | 15 |



| | | |
|----------|---------------------------------------|-----------|
| 6.6 | Cascading System with three Actuators | 16 |
| 6.6.1 | Required Components | 16 |
| 6.6.2 | Connecting the Components | 16 |
| 6.7 | Cascading System with four Actuators | 17 |
| 6.7.1 | Required Components | 17 |
| 6.7.2 | Connecting the Components | 17 |
| 7 | Operation | 18 |
| 7.1 | Reference Drive | 18 |
| 7.2 | Factory Reset | 18 |
| 7.2.1 | With a Basic Hand Control | 18 |
| 7.2.2 | With a Comfort Hand Control | 19 |
| 8 | Troubleshooting | 20 |
| 8.1 | Lexicon | 20 |
| 8.2 | Possible Problems and their Solutions | 20 |
| 9 | Additional Information | 21 |
| 9.1 | Changing a Cascading System | 21 |
| 9.1.1 | Replacing a Control Box | 21 |
| 9.1.2 | Replacing an Actuator | 21 |
| 9.1.3 | Ungrouping a Cascading System | 21 |
| 9.2 | Maintenance | 21 |
| 9.2.1 | Disposal | 21 |



2 GENERAL INFORMATION

Documentation for SMARTneo-2G Cascading Systems consists of this Operating Manual and several other documents. Read all documentation before assembling or operating the table system. Keep all documentation for as long as the product is in your possession. Ensure that all documentation is provided to subsequent owners. Go to www.logicdata.net for more information and support. This Manual may change without notice. The most recent version is available on our website.

2.1 OTHER APPLICABLE DOCUMENTS

This Operating Manual assumes that the reader has read the following documents:

- Datasheet and Operating Manual for the installed Actuator(s)
- Datasheet and Operating Manual for the installed User Interface (Hand Control or other)
- Datasheet and Operating Manual (if applicable) for any installed accessory products
- Datasheet and Operating Manual for the SMARTneo-2G

2.2 COPYRIGHT

© July 2019 by LOGICDATA Electronic und Software Entwicklungs GmbH. All rights reserved, except for those listed in [Chapter 1.3 Royalty-free use of images and text on page 5](#).

2.3 ROYALTY-FREE USE OF IMAGES AND TEXT

After purchase and full payment of the product, all text and images in [Chapter 3, "Safety"](#), may be used free of charge by the customer for 10 years after delivery. They should be used to prepare end user documentation for height-adjustable table systems. The license does not include logos, designs, and page layout elements belonging to LOGICDATA. The customer may make any necessary changes to the text and images to adapt them for the purpose of end user documentation. Texts and images may not be sold in their current state, and may not be published or sublicensed digitally. The transfer of this license to third parties without permission from LOGICDATA is excluded. Full ownership and copyright of the text and graphics remain with LOGICDATA. Texts and graphics are offered in their current state without warranty or promise of any kind. Contact LOGICDATA to obtain text or images in an editable format (documentation@logicdata.net).

2.4 TRADEMARKS

Documentation may include the representation of registered trademarks of goods or services, as well as information about copyright or other proprietary expertise of LOGICDATA or third parties. In all cases, all rights remain exclusively with the respective copyright holder. LOGICDATA® is a registered trademark of LOGICDATA Electronic & Software GmbH in the USA, the European Union, and other countries.



3 SAFETY

3.1 TARGET AUDIENCE

This manual is intended for Skilled Persons only. Refer to Chapter 3.8, Skilled Persons on page 12 to ensure that personnel meet all requirements.

3.2 GENERAL SAFETY REGULATIONS

In general, the following safety regulations and obligations apply when handling the product:

- Do not operate the Cascading System unless it is in a clean and perfect condition
- Do not remove, change, bridge, or bypass any protection, safety, or monitoring equipment
- Do not convert or modify any components without written approval from LOGICDATA
- In the event of malfunction or damage, any faulty components must be replaced immediately
- Unauthorized repairs are prohibited
- Do not attempt to replace hardware unless the system is in a de-energized state
- Only skilled persons are allowed to work on the Cascading System
- Ensure that national worker protection conditions and national safety and accident prevention regulations are observed during operation of the system

3.3 INTENDED USE

The SMARTneo-2G is a Control Box for electrically Height-Adjustable Tables. It is intended for indoor use only. The system may only be installed in compatible Height-Adjustable Tables and with LOGICDATA-approved accessories, including those intended to enable Cascading functionality. Contact LOGICDATA for further details. Use beyond or outside the intended use will void the product's warranty. Please refer to the Operating Manual of each product in the Table System to determine its individual intended use.

The installation site must be level, vibration-free, and free from contamination. It must be ensured that there is no extraordinary exposure through dust, toxic or caustic gases and vapours, or through inadmissible heat exposure at the installation site.

3.4 REASONABLY FORESEEABLE MISUSE

Usage outside of the intended use of a Cascading System could lead to minor injuries, serious injuries, or even death. Reasonably foreseeable misuse of the system includes, but does not extend to:

- Using the system as a climbing or lifting aid for people or animals
- Connecting unauthorized products to a Cascading System. If you are unsure as to whether a product can be used with your system, contact LOGICDATA for further information
- Overloading the Table System



3.5 EXPLANATION OF SYMBOLS AND SIGNAL WORDS

Safety notices contain both symbols and signal words. The signal word indicates the severity of the hazard.



| | | |
|--|----------------|--|
| | DANGER | Indicates a hazardous situation which, if not avoided, will result in death or serious injury. |
| | WARNING | Indicates a hazardous situation which, if not avoided, could result in death or serious injury. |
| | CAUTION | Indicates a hazardous situation which, if not avoided, could result in minor or moderate injury. |
| | NOTICE | Indicates a situation which, if not avoided, could result in damage to the product through electrostatic discharge (ESD). |
| | NOTICE | Indicates a situation that will not lead to personal injury, but could lead to damage to the device or the environment. |
| | INFO | Indicates the protection class of the device: Protection Class III. Protection Class III devices may only be connected to SELV or PELV power sources. |
| | INFO | Indicates important tips for handling the product. |



3.6 LIABILITY

LOGICDATA products comply with all currently applicable health and safety regulations. However, risk can result from incorrect operation or misuse. LOGICDATA is not liable for damage or injury caused by:

- Improper product use
- Disregard of the documentation
- Unauthorized product alterations
- Improper work on and with the product
- Operation of damaged products
- Wear parts
- Improperly performed repairs
- Unauthorized changes to the operating parameters
- Disasters, external influence, and force majeure

The information in this documentation describes the characteristics of the system without assurances. Resellers assume responsibility for the LOGICDATA products installed in their applications. They must ensure their product complies with all relevant directives, standards and laws. LOGICDATA shall not be held liable for any damage that is directly or indirectly caused by the delivery or use of this document. Resellers must observe the relevant safety standards and guidelines for each product in the Table System.



3.7 RESIDUAL RISKS

Residual risks are the risks that remain after all relevant safety standards have been complied with. These have been evaluated in the form of a risk assessment. Residual risks associated with the connection and operation of the Cascading System are listed in this Manual. The risks associated with the installation of other products in the system, including the SMARTneo-2G, are detailed in the respective product's Operating Manual. See also [Chapter 2.1](#). The symbols and signal words used in this Operating Manual are listed in [Chapter 3.5](#).

⚠ WARNING Risk of death or serious injury through electric shocks
The products in the Cascading System are electrical devices. Basic safety precautions must be taken at all times. Failure to observe electrical safety precautions may lead to death or serious injury through electric shocks.

- Never open any product or its components
- Ensure that products are not connected to the mains during assembly
- Ensure that the SMARTneo-2G is supplied with the mains voltage specified on the Type Plate
- Do not convert or modify any product in any way
- Do not place Cables on heated surfaces
- Do not immerse any components in liquid. Clean only with a dry, soft cloth
- Check all housings and cables for visible damage. Do not install or operate damaged products.

⚠ WARNING Risk of death or serious injury in explosive atmospheres
Operating the system in potentially explosive atmospheres may lead to death or serious injury through explosions.

- Read the relevant directives to determine if an atmosphere is potentially explosive
- Do not operate the system in potentially explosive atmospheres

⚠ WARNING Moderate risk of serious injury through electric shocks
While cleaning or using the system, liquid intrusion may lead to serious injury through electric shocks.

- Do not allow any components to become wet during cleaning
- Ensure components are placed away from areas where spillages are likely to occur
- Take care not to spill liquids onto or around the system

⚠ WARNING Moderate risk of serious injury through electric shocks
Inserting cables incorrectly may lead to death or serious injury through electric shocks.

- Ensure only LOGICDATA-approved products are connected to the SMARTneo-2G
- Do not insert incompatible cables into the SMARTneo-2G
- Do not attempt to force cables into the incorrect plug ports

⚠ CAUTION Risk of minor or moderate injury through unexpected movement
Exceeding the static or dynamic load limits of the Table System may cause unexpected operation. This may lead to minor or moderate injury.

- Do not exceed load limits

⚠ CAUTION Risk of minor or moderate injury through crushing
If any Hand Control Key becomes stuck while the system is in motion, the system may not stop properly. This may lead to minor or moderate injury through crushing.

- Disconnect the system immediately if any Hand Control Key becomes stuck

⚠ CAUTION Risk of minor or moderate injury through tripping
During the assembly process, you may have to step over Cables. Tripping over Cables may lead to minor or moderate injury.

- Ensure that the assembly area is kept clear of unnecessary obstructions
- Be careful not to trip over Cables

⚠ CAUTION This appliance can be used by children from 8 years and above and people with reduced physical, sensory or mental capabilities or lack of experience and knowledge if they have been given supervision or instruction concerning the use of the appliance in a safe way and understand the hazards involved. Children must not play with the appliance. Cleaning and maintenance by the user must not be performed by children, unless they are over 8 years old and supervised.



3.8 SKILLED PERSONS

- ⚠ CAUTION Risk of injury through incorrect installation**
 Only Skilled Persons have the expertise to complete the installation process safely. Installation by unskilled persons can lead to minor or moderate personal injury.
- Ensure that only Skilled Persons are allowed to complete the installation
 - Ensure that persons with limited ability to react to danger do not take part in the assembly process

The Cascading System may only be assembled by Skilled Persons. A Skilled Person is defined as someone who:

- Is authorized for installation planning, installation, commissioning, or maintenance/servicing of each product in the Table System
- Has read and understood the Cascading System documentation, as well as the documentation relevant to the component products of the system
- Has the technical education, training, and/or experience to perceive risks and avoid hazards
- Has knowledge of the specialist standards applicable to the product
- Has the expertise to test, assess, and manage electrical and mechatronic products and systems in accordance with the generally accepted standards and guidelines of electrical engineering and furniture manufacturing

3.9 NOTES FOR RESELLERS

Resellers are companies that purchase LOGICDATA products for installation in their own products.



| | |
|-------------|--|
| INFO | For reasons of EU conformity and product safety, Resellers should provide end users with an Operating Manual in their native EU official language. |
| INFO | The Charter of the French Language (La charte de la langue française) or Bill 101 (Loi 101) guarantees the right of the population of Quebec to conduct business and commercial activities in French. The bill applies to all products sold and used in Quebec. For table systems that will be sold or used in Quebec, Resellers must provide all product-relevant texts in French. These include, but are not limited to: <ul style="list-style-type: none"> • Operating Manuals • All other product documentation, including datasheets • Inscriptions on the product (such as labels), including those on product packaging • Warranty certificates The French inscription may be accompanied with a translation or translations, but no inscription in another language may be given greater prominence than that in French. |
| INFO | Operating Manuals must include all the safety instructions that end users require to handle the product safely. They must also include an instruction to always keep the Operating Manual in the immediate vicinity of the product. |
| INFO | No unauthorized persons (young children, persons under the influence of medications, etc.) should be allowed to handle the product. |
| INFO | Resellers must perform a risk assessment on their product that covers residual hazards. It must include measures to mitigate risk or reference the product's Operating Manual. |

4 SCOPE OF DELIVERY

The scope of delivery for the Cascading System depends on the configuration chosen. See the “Required Components” sub-chapter for your chosen configuration to see which components are necessary. The components supplied in each product's package are outlined in the respective Operating Manuals.



5 PRODUCT

5.1 ABOUT CASCADING

Cascading is the process of connecting two SMARTneo-2G Control Boxes together in order to control extra Actuators. A maximum of 4 Actuators can be connected. Each Actuator must be of the same type.

In Cascading Systems, the two Control Boxes are connected by a Sync Cable (LOG-CBL-SMARTneo-SYNC-1000). The process of creating a Cascading System consists of two stages:

1. **Connecting the components (Chapter 6.5 - 6-7)**
2. **Performing a Reference Drive (Chapter 7.1)**

5.2 ABOUT THE SMARTNEO-2G

The SMARTneo-2G is a Control Box for height-adjustable tables. There are variants of the SMARTneo-2G for specific domestic mains power supplies (e.g. EU or US). The exact variant is denoted by the product's order code. Consult the accompanying Datasheet to ensure that you have received the correct variant. The functions your SMARTneo-2G Control Box can fulfil is also dependent on parameterization.

NOTICE This Cascading Manual is only valid for the SMARTneo-2G (2nd generation). Consult your product's Datasheet and Type Plate to ensure this is the correct Manual for your product.

5.2.1 CONTROL BOX CONNECTION POINTS

| | |
|---|-----------------------------|
| 1 | DC/Com Port (Sync Cable) |
| 2 | Motor Port 1 (M1) |
| 3 | Motor Port 2 (M2) |
| 4 | Hand Control Port (HC) |
| 5 | AC Input Port (Power Cable) |

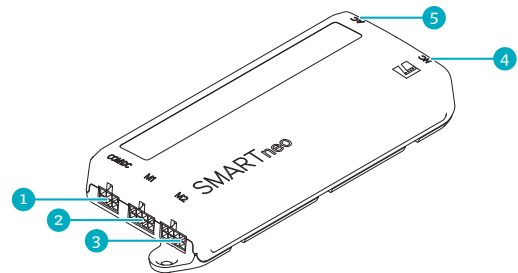


Fig. 2: Control Box Connection Points

5.2.2 HAND CONTROL

All instructions assume the reader has assembled a Table System that will be controlled by a Hand Control with an UP Key and DOWN Key. If your Table System is operated by a different User Interface, consult that product's operating Manual for instructions on operating the Table System. The availability of some functions depends on the Hand Control used. This section describes two variants:

- **Comfort Hand Controls** - These products have a digital display and can save Memory Positions
- **Basic Hand Controls** - These products have only an UP and DOWN key

Hand Control Keys are represented as follows for further description:

| | |
|--|-----------------------------|
| | UP Key |
| | DOWN Key |
| | SAVE Key |
| | Memory Position Keys |



6 CONNECTING THE SYSTEM

The SMARTneo-2G can be used to create a variety of Table Systems. This Manual describes the connection of table systems in which two Control Boxes will be connected.

This chapter describes the process of connecting the Cascading System's components after they have been mounted to the Height-Adjustable Table System. You must read the documentation for each part of the system (Actuator, User Interface, Control Box, etc.) for that product's mounting instructions.

This Chapter outlines three common configurations for Cascading Systems. For further information concerning other cascading options for the SMARTneo-2gen, please contact LOGICDATA.

6.1 SAFETY

⚠ WARNING **Moderate risk of death or serious injury through electric shocks**
Connecting the system incorrectly can lead to serious injury through electric shocks.

- Ensure that the supplied voltage complies with the SMARTneo-2G's type plate
- Ensure all components are connected to the correct sockets
- Do not use unauthorized accessory parts or cables
- Disconnect the SMARTneo-2G from the power outlet before removing or connecting any components
- Connect the system to the Mains only after all other components (Actuators, additional Control Boxes etc.) have been connected to the SMARTneo-2G

⚠ WARNING **Moderate risk of death or serious injury through electric shocks**
Using damaged products may lead to death or serious injury through electric shocks.

- Do not operate the Cascading System if you see housings or cables are damaged

⚠ NOTICE Ensure proper ESD handling during assembly. Damage that can be attributed to electrostatic discharge will void warranty claims.

NOTICE This manual is applicable for Cascading Systems with the SMARTneo-2G Control Box. SMARTneo-2G Control Boxes cannot be connected to any other type of Control Box. Connecting incompatible Control Boxes may damage the Table System.

INFO Perform a product risk assessment so that you can respond to potential residual hazards. Assembly instructions must be included in your end user Operating Manual

6.2 DIMENSIONS

The dimensions of each product in the Table System can be found in that product's Datasheet.

6.3 ASSEMBLY INSTRUCTIONS

Assembly instructions for each product in the Table System can be found in that product's Manual.

6.4 SPECIFICATIONS FOR THE CASCADING SYSTEM

Before connecting the Cascading System, make sure that the following requirements are met:

- Assembly has been completed safely and correctly for all components
- All Actuators are of the same type (e.g. SLIMdrive-660s or SLIMdrive-500)
- The Control Boxes are set to factory settings (Chapter [7.2 Factory Reset, page 18](#)) or have been correctly parameterized. Otherwise, a Factory Reset is required during setup.
- The voltage supply corresponds to the specifications on the respective type plate

6.5 CASCADING SYSTEM WITH TWO ACTUATORS


INFO

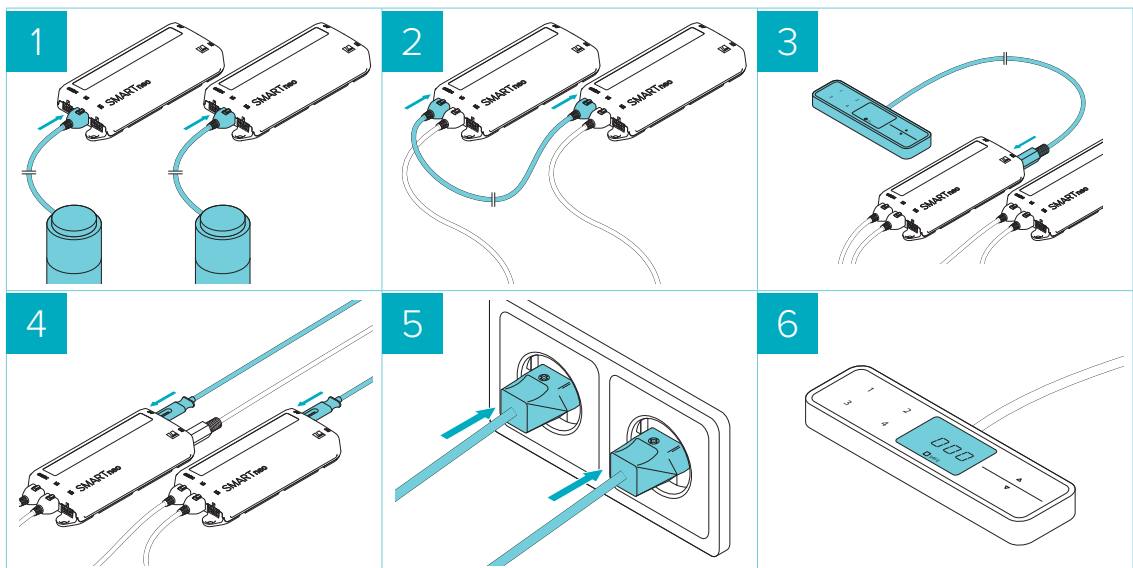
When a Hand Control is connected to a Cascading System for the first time, the Control Box it is connected to becomes the master. The other Control Box is the slave. If you wish to change which Control Box is the master, a factory reset is required.

6.5.1 REQUIRED COMPONENTS

| Quantity | Component |
|----------|---|
| 1 | Hand Control |
| 2 | SMARTneo-2G Control Boxes |
| 2 | Actuators. Only one type of Actuator (e.g. SLIMdrive-660s) can be used in each system |
| 1 | LOG-CBL-SMARTneo-SYNC-1000 Sync Cable |
| 2 | Power Cables |

6.5.2 CONNECTING THE COMPONENTS

1. Connect the first Actuator to a Control Box (M1)
2. Connect the second Actuator to the second Control Box (M1)
3. Connect the two Control Boxes using the Sync Cable (COM/DC)
4. Connect the Hand Control to a Control Box (HC)
5. Connect each Control Box to a separate Power Cable (AC)
6. Connect the Power Cables to the power source
 - ▶ Each Control Box emits two short clicks
 - ▶ (If a Comfort Hand Control is used) The display on the Hand Control shows 
7. If the Control Boxes were not previously set to factory settings, perform a Factory Reset ([Chapter 7.2, page 18](#))



6.6 CASCADING SYSTEM WITH THREE ACTUATORS


INFO

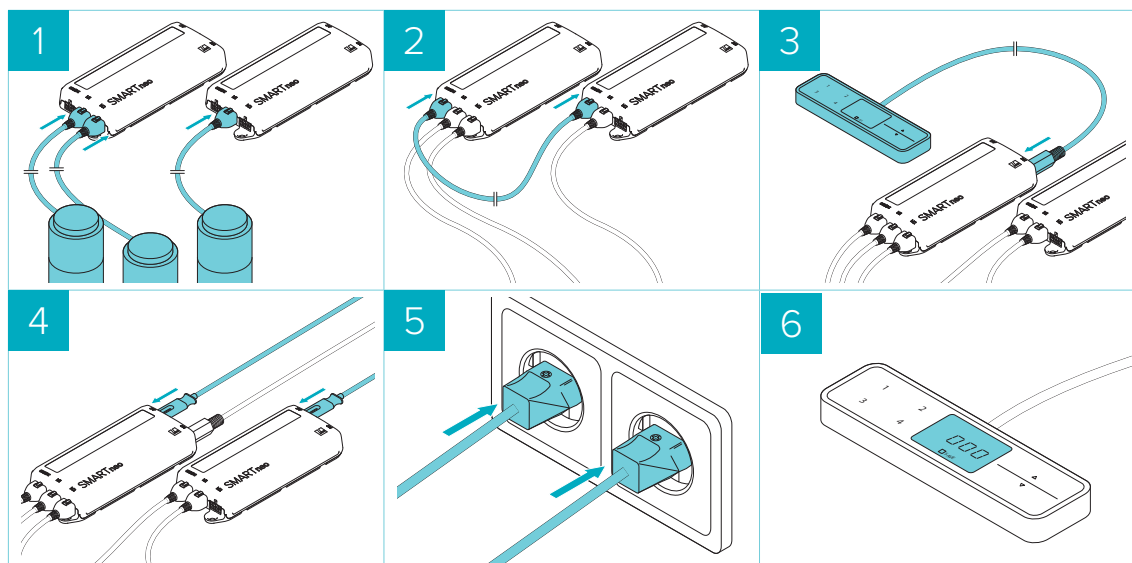
When a Hand Control is connected to a Cascading System for the first time, the Control Box it is connected to becomes the master. The other Control Box is the slave. If you wish to change which Control Box is the master, a factory reset is required.

6.6.1 REQUIRED COMPONENTS

| Quantity | Component |
|----------|---|
| 1 | Hand Control |
| 2 | SMARTneo-2G Control Boxes |
| 3 | Actuators. Only one type of Actuator (e.g. SLIMdrive-660s) can be used in each system |
| 1 | LOG-CBL-SMARTneo-SYNC-1000 Sync Cable |
| 2 | Power Cables |

6.6.2 CONNECTING THE COMPONENTS

1. Connect the first two Actuators to a Control Box (M1 and M2)
2. Connect the third Actuator to the second Control Box (M1)
3. Connect the two Control Boxes using the Sync Cable (COM/DC)
4. Connect the Hand Control to a Control Box (HC)
5. Connect each Control Box to a separate Power Cable (AC)
6. Connect the Power Cables to the power source
 - ▶ Each Control Box emits two short clicks
 - ▶ (If a Comfort Hand Control is used) The display on the Hand Control shows 
7. If the Control Boxes were not previously set to factory settings, perform a Factory Reset ([Chapter 7.2, page 18](#))



6.7 CASCADING SYSTEM WITH FOUR ACTUATORS


INFO

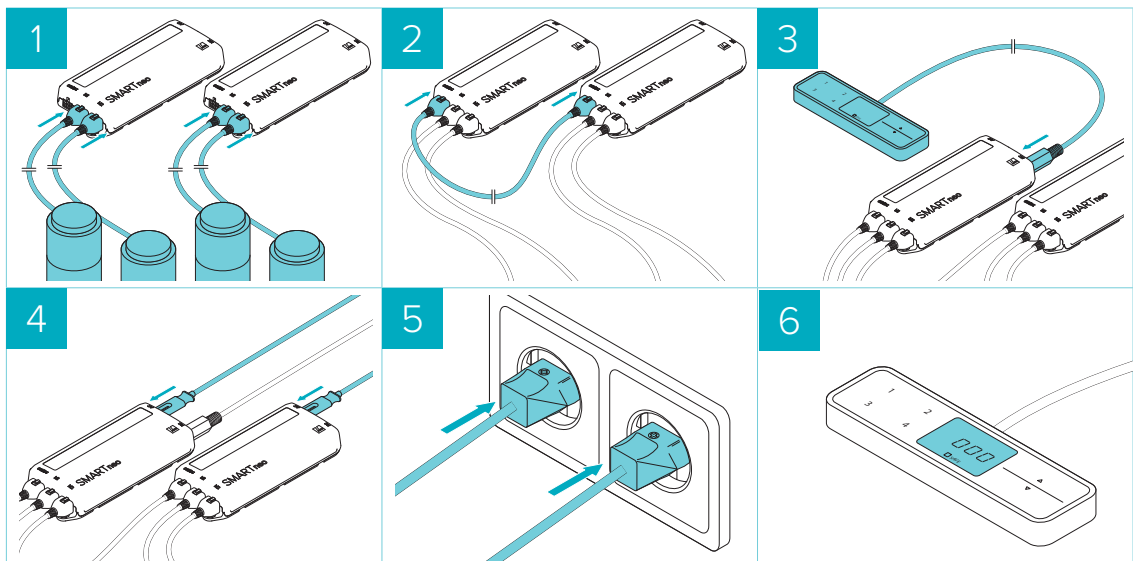
When a Hand Control is connected to a Cascading System for the first time, the Control Box it is connected to becomes the master. The other Control Box is the slave. If you wish to change which Control Box is the master, a factory reset is required.

6.7.1 REQUIRED COMPONENTS

| Quantity | Component |
|----------|---|
| 1 | Hand Control |
| 2 | SMARTneo-2G Control Boxes |
| 4 | Actuators. Only one type of Actuator (e.g. SLIMdrive-660s) can be used in each system |
| 1 | LOG-CBL-SMARTneo-SYNC-1000 Sync Cable |
| 2 | Power Cables |

6.7.2 CONNECTING THE COMPONENTS

1. Connect the first two Actuators to a Control Box (M1 and M2)
2. Connect the third and fourth Actuators to the second Control Box (M1 and M2)
3. Connect the two Control Boxes using the Sync Cable (COM/DC)
4. Connect the Hand Control to a Control Box (HC)
5. Connect each Control Box to a separate Power Cable (AC)
6. Connect the Power Cables to the power source
 - ▶ Each Control Box emits two short clicks
 - ▶ (If a Comfort Hand Control is used) The display on the Hand Control shows 
7. If the Control Boxes were not previously set to factory settings, perform a Factory Reset ([Chapter 7.2, page 18](#))





7 OPERATION

! CAUTION **Risk of minor or moderate injury through uncontrolled movement**
 The table may not always stop exactly at the expected position. Failure to anticipate the table's movements may lead to minor or moderate injury through crushing.

- Wait until the system has completely stopped before attempting to use the table

! CAUTION **Risk of minor or moderate injury through unsecured objects**
 While the table moves up and down, unsecured objects may fall off the table and onto body parts. This may lead to minor or moderate injury through crushing.



- Ensure loose objects are kept away from the edge of the table
- Do not leave unnecessary objects on the table during movement

This Chapter describes functions that are specific to the Cascading System. Operation Instructions applicable for all Table Systems can be found in the manual for the SMARTneo-2G.

7.1 REFERENCE DRIVE

NOTICE Ensure that all Actuators move in the same direction and adjust the height of the desktop during the Reference Drive. Misalignment may damage the system.



A Reference Drive allows the Actuators to be retracted or extended to a parameterized reference length. A Reference Drive must be performed after the Cascading System has been connected for the first time.

| | |
|--|---|
| | Ensure that all components are connected correctly. |
|   | Press and hold the DOWN Key <ul style="list-style-type: none"> ▶ The Actuators start up at reduced speed ▶ The Control Box will click when the table top reaches its lowest position. ▶ (If a Comfort Hand Control is used) The display on the Hand Control shows the parameterized position of the Actuators. |
| | Wait for at least 3 seconds During this time, motor detection is completed and saved. <ul style="list-style-type: none"> ▶ The Reference Drive is complete |

7.2 FACTORY RESET (SO RESET)






With this function, you can reset the SMARTneo-2G to its factory settings. No Factory Reset is required before setup. Factory Resets are required after changes in the setup of Cascading System and to reset the Slave-Master hierarchy in the system (e.g. if a previous Slave will become the new Master). Resetting the Master Control Box in the Cascading System also resets the Slave. If the Control Boxes are already in Factory Settings, no Factory Reset is needed.

7.2.1 USING A BASIC HAND CONTROL

| | |
|---|--|
| | Disconnect the Control Box from the mains. |
|  | While disconnected, press and hold the UP and DOWN Keys |
| | Reconnect the Control Box. Hold the Keys until the Control Box clicks twice per second. |
|  | Release the UP and DOWN Keys |
| | The SMARTneo-2G has now been reset to its factory settings. It is now in the same state as it was during the first start-up. |



7.2.2 USING A COMFORT HAND CONTROL

| | |
|--|---|
|  | Press and hold the following Keys for 3 seconds: <ul style="list-style-type: none"> • Memory Position Keys 1 and 2 • UP Key |
|  | The display shows S and a number (e.g. S 4) |
|  | Press the DOWN Key until the display shows S o. |
|  | The display shows S o. |
|  | Press the SAVE Key . |
| The SMARTneo-2G has now been reset to its factory settings. It is now in the same state as it was during the first start-up. | |

INFO Resetting the Master Control Box in the system to factory settings will automatically reset the Slave Control Box.

INFO If you wish to reset a Slave Control Box separately from the master, you will need to do so in Single Mode. To proceed:

- Disconnect all Control Boxes from the Mains and wait for 20-30 seconds
- Connect a Comfort Handset to the Slave
- Reconnect the Slave Control Box to the Mains
- Use the instructions above to carry out a Factory Reset



8 TROUBLESHOOTING

8.1 LEXICON

| Term | Definition |
|--------------------|--|
| Single Control Box | A Control Box that is not parameterized for Cascading. It may only be operated as an individual Control Box. |
| Cascading | Cascading is a system that enables the synchronous operation of multiple Actuators. Two Control Boxes are connected to each other for this purpose. |
| Master | In the Cascading System, the master is the Control Box that was first connected to the Hand Control. Input via the Hand Control is only possible through the master. |
| Single Mode | A Control Box setting for boxes that can be cascaded, but are only operated as an individual Control Box. |
| Slave | In a Cascading System, the slave is the Control Box connected to the master. |

8.2 POSSIBLE PROBLEMS AND THEIR SOLUTIONS

| Error code / malfunction | Possible cause | Solution |
|--|--|---|
| E70 | Actuator configuration has been changed | Disconnect the Control Boxes from the power supply for approx. 30 seconds Reconnect the Control Boxes to the power supply Perform a Reference Drive |
| E93 | Cascading errors | Check all plug connections Check all cables and replace defective ones if necessary Check Control Boxes and replace defective ones if necessary |
| The Control Box does not respond to inputs via the Hand Control | The Control Box is not defined as the master | Disconnect the Hand Control from the Control Box Reset the Control Box to factory settings, see chapter 8 on page 18 |
| | The Control Box is defective | Contact customer services |

For further information, or if you are experiencing problems that are not covered in this chapter, refer to the operating manual of the Hand Control and the operating manual of the SMARTneo-2G Control Box.



9 ADDITIONAL INFORMATION

9.1 CHANGING A CASCADING SYSTEM

Before any changes to a Cascading System are made, ensure both Control Boxes have been disconnected from the Power Source.

After changing a Cascading System, you may need to perform a Factory Reset. [Go to Chapter 7.2](#) for further instructions.

9.1.1 REPLACING A CONTROL BOX

To exchange Control Boxes in an existing Cascading System, proceed as follows:

1. Reset both Control Boxes to factory settings, see chapter [7.2](#). (Optional: Can also be performed after reconnection).
2. Disconnect the Control Boxes from the power source
3. Use the instructions in Chapter 6 to connect the components to the new Control Box

9.1.2 REPLACING AN ACTUATOR

To replace Actuators in an existing Cascading System, proceed as follows:

1. Disconnect the unwanted Actuator from the Control Box
2. Connect the new Actuator to the Control Box
3. Perform a Reference Drive, see chapter [7.1](#)

9.1.3 UNGROUPING A CASCADING SYSTEM

1. Reset the Control Boxes to factory settings, see chapter [7.2](#). (Optional: Can also be performed after reconnection).
2. Disconnect the Control Boxes from the power supply
3. Disconnect the cables

9.2 MAINTENANCE

All components in the Cascading System are maintenance-free for their entire service lifetimes. If cleaning of any product required, wipe its housing with a soft, dry cloth.

9.2.1 DISPOSAL



The SMARTneo-2G is an electrical and electronic device that must be disposed of separately from household trash in accordance with the WEEE directive 2012/19/EU. Products of this type are labelled with the symbol shown on the left.

Before disposing of materials and components, check their recyclability. Recycle all parts if possible. Dispose of all materials and parts according local guidelines and regulations. Ensure that the disposal is lastingly compatible for humans and nature.



MOTION FOR YOUR LIFE

LOGICDATA
Electronic & Software Entwicklungs GmbH
Wirtschaftspark 18
8530 Deutschlandsberg
Austria

Phone: +43 (0)3462 5198 0
Fax: +43 (0)3462 5198 1030
Email: office.at@logicdata.net
Internet: <http://www.logicdata.net>

LOGICDATA North America, Inc.
1525 Gezon Parkway SW, Suite C
Grand Rapids, MI 49509
USA

Phone: +1 (616) 328 8841
Email: office.na@logicdata.net



www.logicdata.net